



Coimisiún na Scrúduithe Stáit
State Examinations Commission

JUNIOR CERTIFICATE EXAMINATION, 2014

METALWORK

TECHNIQUES AND DESIGN - PRACTICAL EXAMINATION – HIGHER LEVEL
150 marks

PLEASE READ CAREFULLY

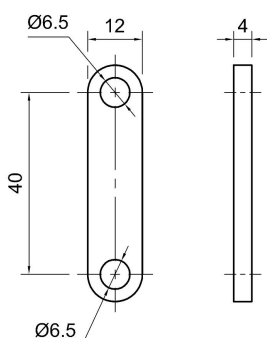
Instructions to candidates

- Each candidate is required to prepare materials and make **Parts 2, 4, 5 and 6**, according to the materials list and drawings shown, prior to the Practical Examination in May 2014.
- Prepared materials and finished components **must be the candidate's own individual work** and should be clearly identified and safely stored until examination day.
- If you use machinery other than that specified in the equipment list in S58(ML1) to process any part of the examination material, you will lose marks under the relevant headings in the marking scheme.**

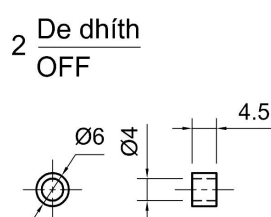
Materials per candidate		
Required	Material	Size
1 piece	Coloured Acrylic to make Part 1	110 × 60 × 5
1 piece	Aluminium to make Part 2	60 × 12 × 4
1 piece	Aluminium to make Part 3	60 × 60 × 4
2 pieces	Aluminium to make Parts 4	Round Tube, O.D. 6 mm, I.D. 4 mm
1 piece	Aluminium to make Part 5	20 × 20 × 4
1 piece	Aluminium to make Part 6	Ø30
1 piece	Aluminium to make Part 7	40 × 40 × 4
2 OFF	Steel	M5 × 16, Pan Head Screw
2 OFF	Steel	M4 × 8, Pan Head Screw
1 OFF	Steel	M4 × 12, CSK Set Screw
2 OFF	Steel	M5, Nut

Note: Bold dimensions are finished sizes.

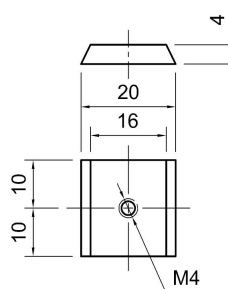
Part 2



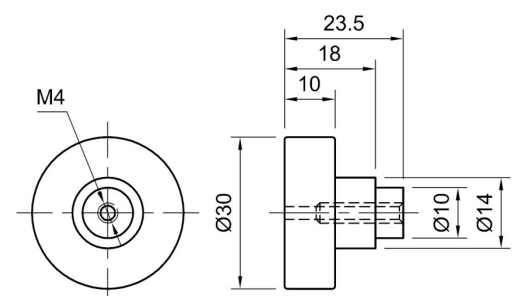
Part 4



Part 5



Part 6





Coimisiún na Scrúduithe Stáit

SCRÚDÚ AN TEASTAIS SHÓISEARAIGH, 2014

MIOTALÓIREACTH

TEICNÍOCHTAÍ AGUS DEARADH – SCRÚDÚ PRAITICIÚIL – ARDLEIBHÉAL
150 marc

LÉIGH AN PÁIPÉAR SEO GO CÚRAMACH, LE DO THOIL

Treoracha d'iarrthóirí

1. Caithfidh gach iarrthóir ábhair a ullmhú agus **Páirt 2, 4, 5** agus **6** a dhéanamh, de réir liosta na n-ábhar agus na líníochta a thaispeántar, roimh an Scrúdú Praiticiúil i mBealtaine 2014.
2. **Saothar dílis de chuid an iarrthóra féin** a chaithfidh a bheith sna hábhair ullmhaithe agus sna comhphárteanna críochnaithe, agus ba cheart iad a shainaitheint go soiléir agus iad a choimeád i dtaisce go sábháilte go dtí lá an scrúdaithe.
3. **Má bhaineann tú úsáid as innealra seachas an t-innealra a luaitear sa liosta trealaimh S58(ML1) chun páirt ar bith den ábhar scrúdaithe a phróiseáil, caillfidh tú marcanna faoi na ceannteidil chuí sa scéim mharcála.**

Ábhair in aghaidh an iarrthóra		
Ag teastáil	Ábhar	Toisí
1 Phíosa amháin	Aicrileach daite chun Páirt 1 a dhéanamh	110 × 60 × 5
1 Phíosa amháin	Alúmanam chun Páirt 2 a dhéanamh	60 × 12 × 4
1 Phíosa amháin	Alúmanam chun Páirt 3 a dhéanamh	60 × 60 × 4
2 Phíosa	Alúmanam chun na Páirteanna 4 a dhéanamh	Tiúb Cruinn, O.D. 6 mm, I.D. 4 mm
1 Phíosa amháin	Alúmanam chun Páirt 5 a dhéanamh	20 × 20 × 4
1 Phíosa amháin	Alúmanam chun Páirt 6 a dhéanamh	Ø30
1 Phíosa amháin	Alúmanam chun Páirt 7 a dhéanamh	40 × 40 × 4
2 Phíosa	Cruach	M5 × 16, Scriú Ceann Panna
2 Phíosa	Cruach	M4 × 8, Scriú Ceann Panna
1 Phíosa amháin	Cruach	M4 × 12, Scriú Suite CSK
2 Phíosa	Cruach	M5, Cnó

Nóta: Is toisí críochnaithe iad na toisí i gcló trom.

